

A&E Rotary Engraving Report

How To Engrave On A Watch Back Using GravoStyle5 Point and Shoot Positioning

By Jonathan Cohen



INTRODUCTION

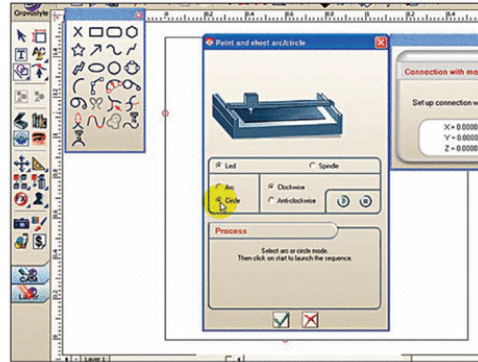
This article describes how to quickly and easily engrave on a watch back. The unique aspect of this process is the method of locating the engraving job as designed in the software onto the actual item. We use a red laser spotting beam to indicate where the engraving is to be positioned. No measuring is required. This innovative feature was first applied to engraving machines by Gravo-graph—first on

the Optima laser, and then on the M40 Gift rotary engraver, and now on a wide range of laser and rotary machines.

THE PROCESS

1. Secure the item in the watch jigs. You may have to remove the band if it is in the way. Alternatively, you can remove the watch back.
2. In GravoStyle 5 software, open the Shapes dialog for the polyline (multi-point) Point and Shoot feature. We choose the Circle shape which

The finished engraving.



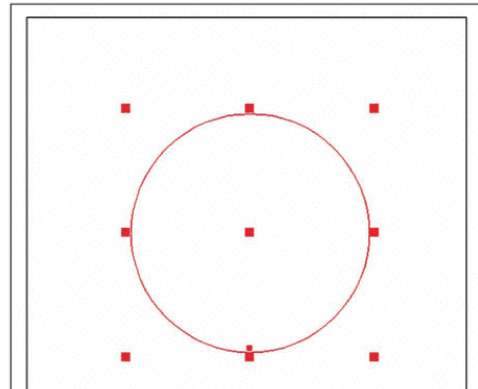
Step 2—Point and shoot circle.



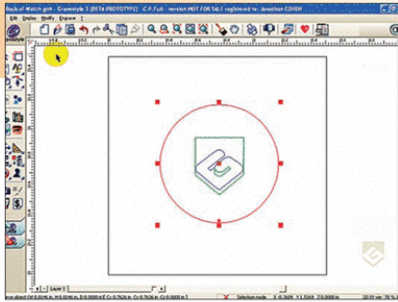
Step 3—Guided by user prompts.



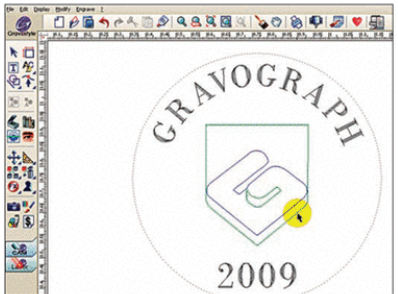
Step 3—Point to three points on a circle in succession.



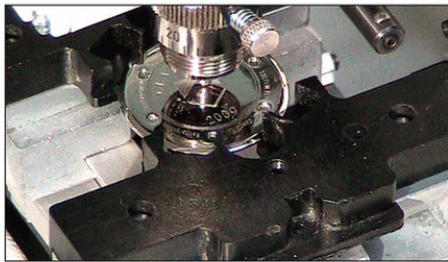
Step 4—Resulting circle in GravoStyle5 Engraving Software.



Step 5—The centered logo.



Step 6—Added text.



Step 7—Engraving.

we will create with three points on the watch back. This will be the baseline for our text.

3. Start the Point and Shoot process by clicking the green arrow. The prompts and animation guide you. Using the keypad arrows on the engraver, jog to each of three points in succession, validating each point by pressing the Check key on the engraver keypad. The points can be along the circumference or any text or stampings identifying a circle. Complete the process by clicking the green Check button in the on-screen dialog.
4. GravoStyle5 now draws a circle in the software of the size identified and positioned in the engraving field.
5. We place our logo in the center of the circle.
6. We place our text on this circle using it as a baseline.
7. Finally, we output the job to the engraver. No further positioning or measuring is required.

A&E

Jonathan Cohen is the Machine & Software Product Manager for Gravograph, www.gravograph.com.

★ MADE IN THE USA

Make a lasting impression

Your complete source for identification tools.

When you order Young Bros. identification tools, you know you're getting the very best. Our name stands for quality in steel stamps, brass stencils and steel type.

Young Bros. Stamp Works Inc.
Since 1904

CELEBRATING QUALITY FOR OVER 100 YEARS

★ HAND STAMPS

★ TAGS

STEEL TYPE

★ STENCILS

800.553.8248 • fax 800.982.0011 • www.youngbrosstampworks.com

Use INFO #267

The industry's finest supplier of cast plaques and letters presents

Perfect Impression™

Stunning pictorials in cast bronze & aluminum plaques are now available at a hard to beat price.

This revolutionary process allows the designer to create beautiful pictorials at a fraction of the cost of bas relief castings. You supply the photos and we do the rest. Call today and let us make a Perfect Impression on your project.

WELCOME TO THE JUNGLE
THEME PARK & ZOO

Boston Red Sox 1914-1919 New York Yankees 1920-1934 Boston Braves 1930

Babe Ruth

Feb 6, 1895 - Aug 16, 1948

Career Statistics:
 Batting Average .343 Home Runs 714
 Walk-Base Record 64-48 RBI 2,217
 ERA 2.28 Strikeouts 408

A.R.K.RAMOS

SIGNAGE SYSTEMS

800-725-7266 • WWW.ARKRAMOS.COM

Use INFO #160