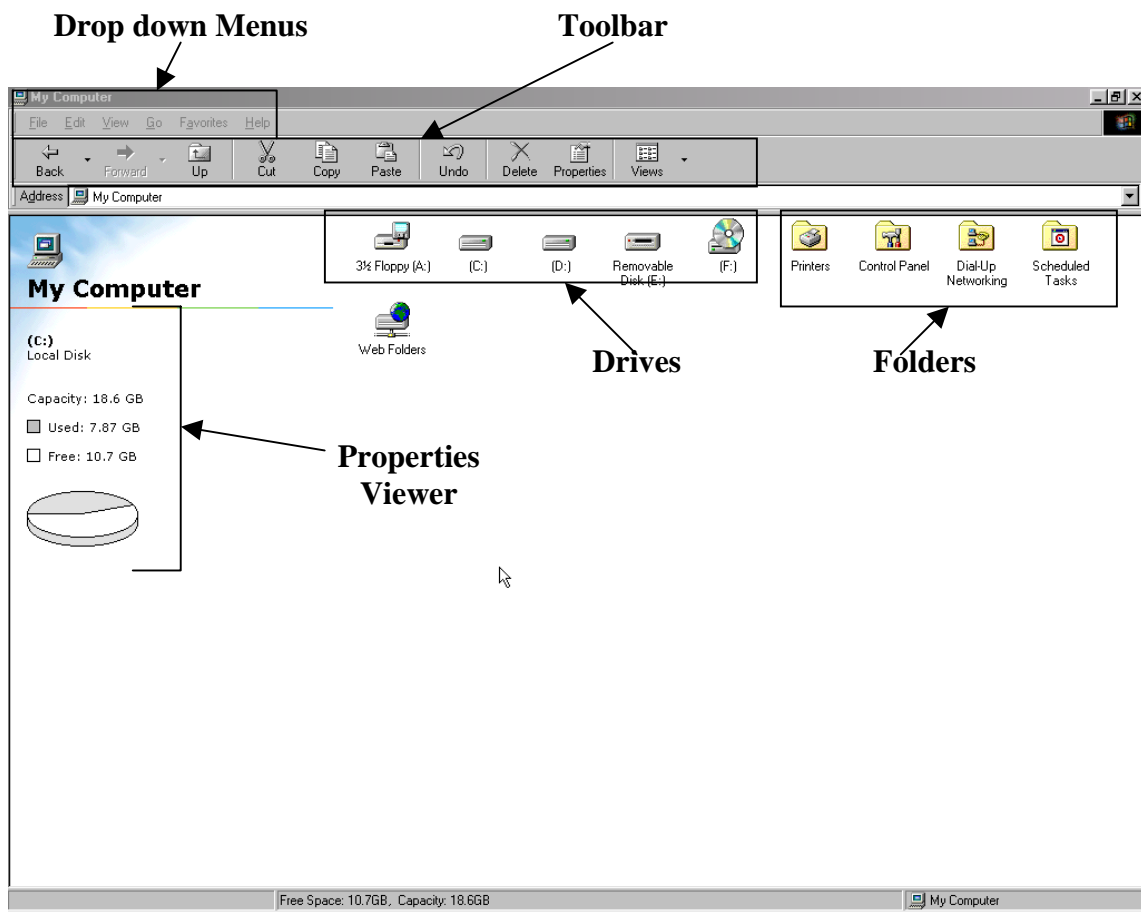


# My Computer

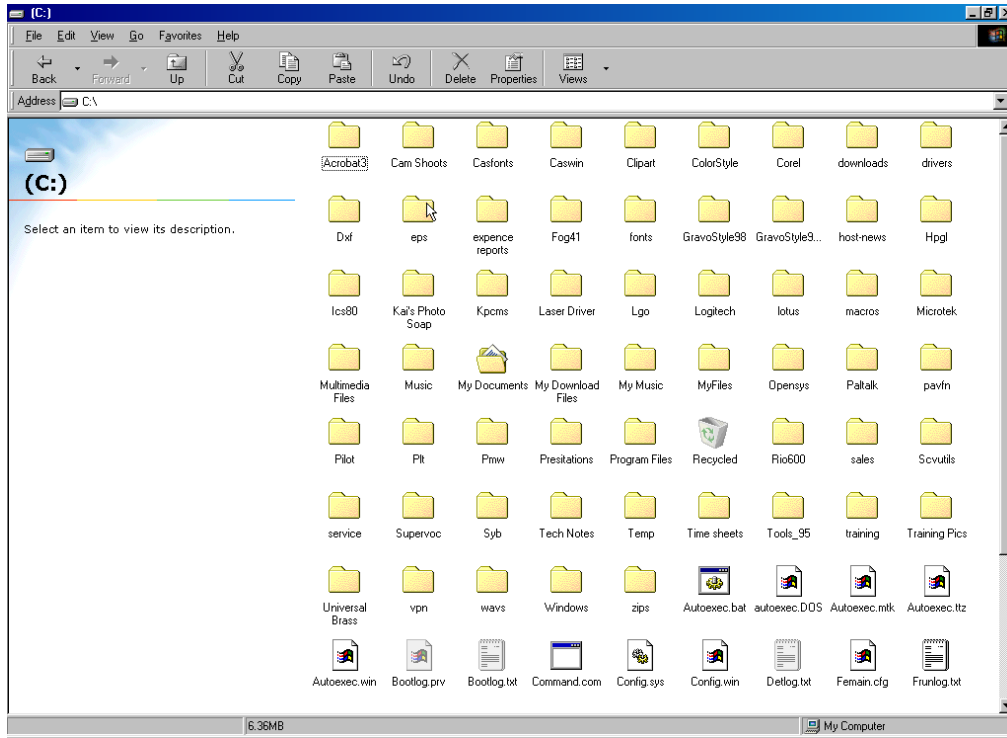


1. The My Computer Icon on the Desktop can be used as a file manager. It also can be used to access folders for your Printers, Dial-up Adapters, Control Panel and your Scheduled Tasks. Double Left Click on the Icon and it will pull up the My Computer Page.

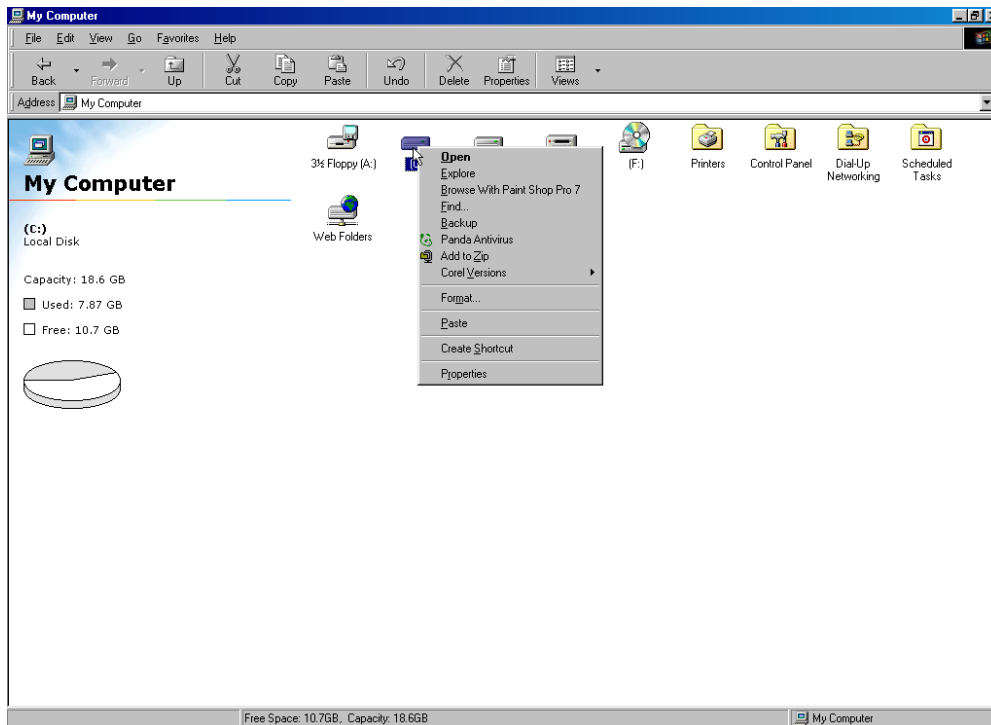


Single Left Click on the Drive and the Properties Viewer will display the Drive.

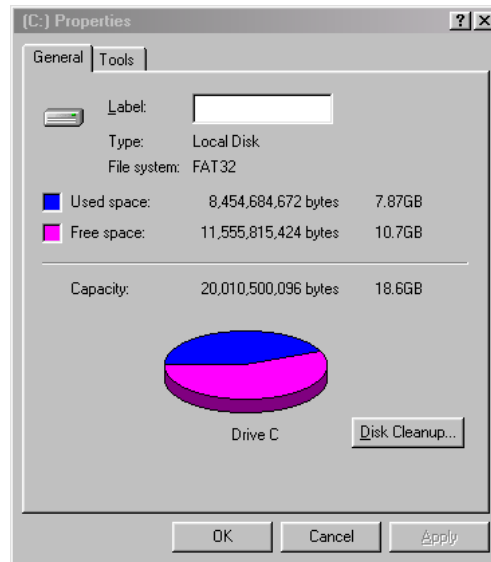
Double Left Click and File Manager will display all the files and folder that are on the drive.



Right Click on the Drive and another Menu Window will pop up.



Left Click on Properties and the Drive Properties Window will pop up. This Window will also give you tools to maintain your drive.



- To enter into the Control Panel, just double left click the Control Panel Folder. The Control Panel allows you to make changes to the system settings and to your devices. It also allows you to Remove and Install Devices/Software.

