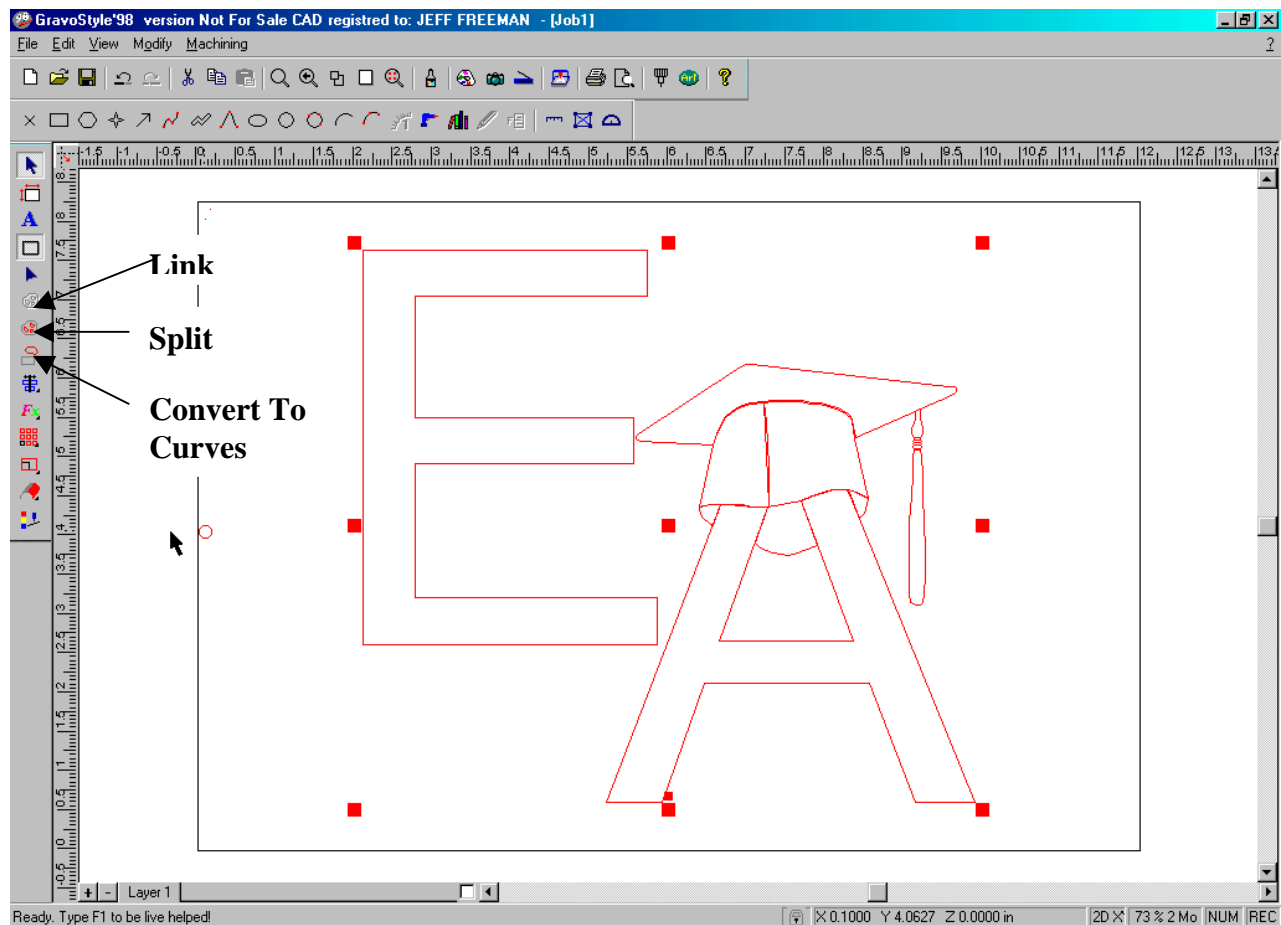






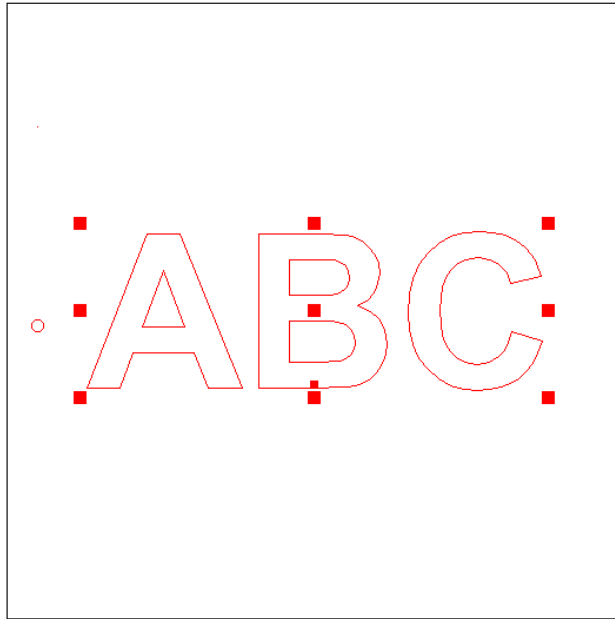
GRAVOGRAPH NEW HERMES


Convert to Curves, Split and Link

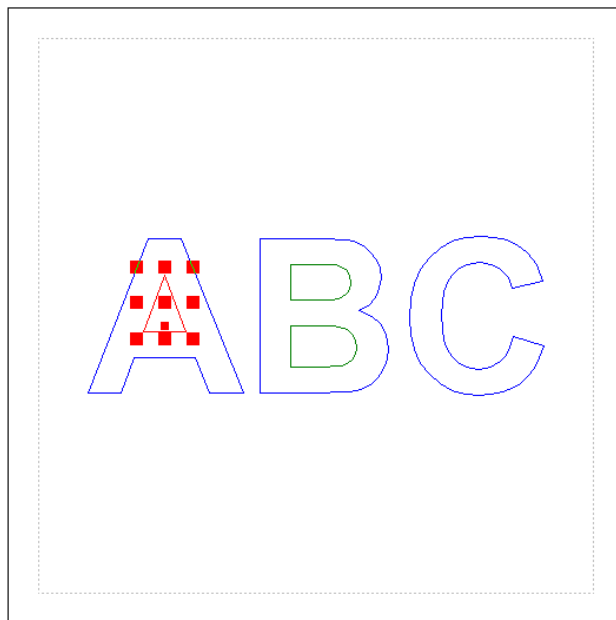
1. At times it may be desirable to alter the shape of a text character. A common situation that arises is the need to duplicate altered or custom letters of a logo. In order to manipulate text it must first be converted to curves. Once converted, it is an object, and can be modified in the point edit mode, or with special effects tools. Split and Link functions become important once an item has been converted to curves. Split allows the selection of individual pieces of the object, enabling independent changes or effects to be performed. Objects should once again be linked, when modifications are completed.




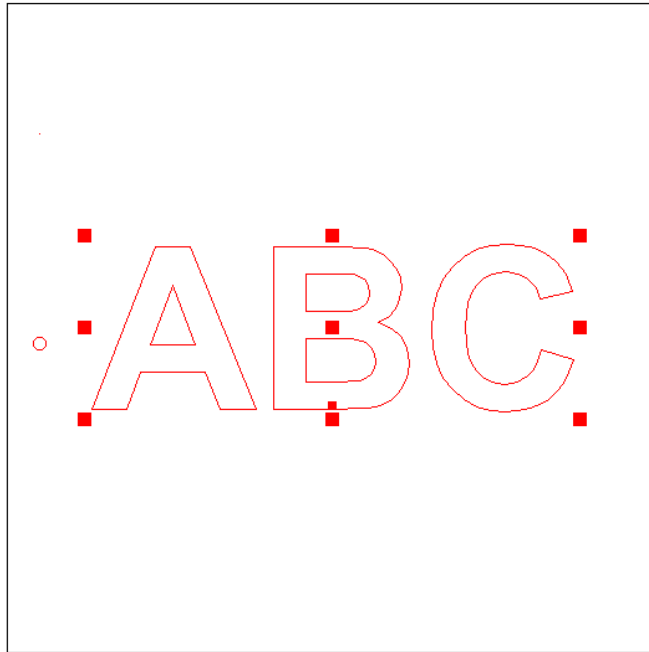
2. Once the text is on the piece and ready to modify press on the Select Mode . Notice that the Convert to Curves icon highlights. Click on the Convert to Curves icon  to change text to objects. The object will be all linked together as one.



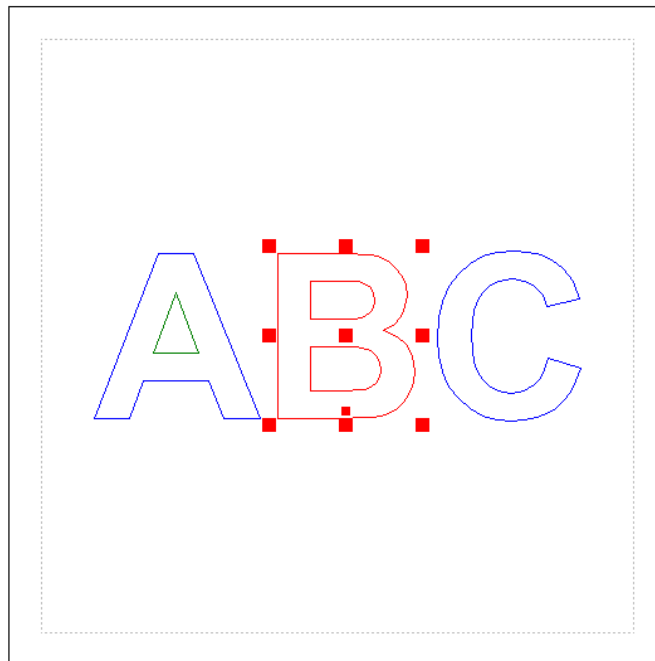
3. In order to work on the individual contours, split the object apart. Click on the Split icon , now each contour is separate.



4. Now modifications are complete on your work, link it back together. Select contours to be linked together, and press the Link icon .



All Linked Together



Three Separate Objects