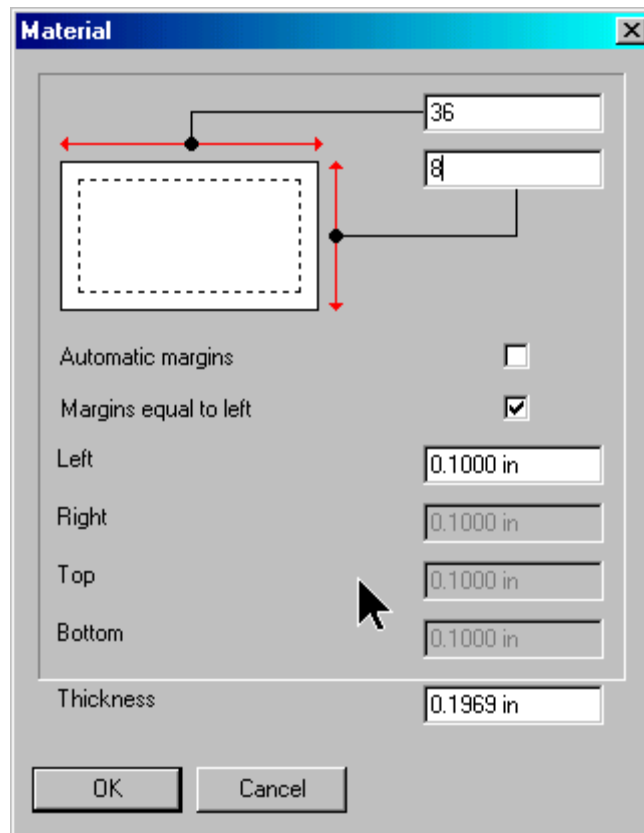




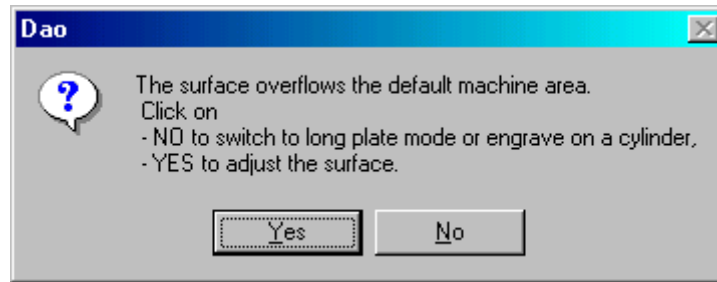
GRAVOGRAPH NEW HERMES


Long Plate

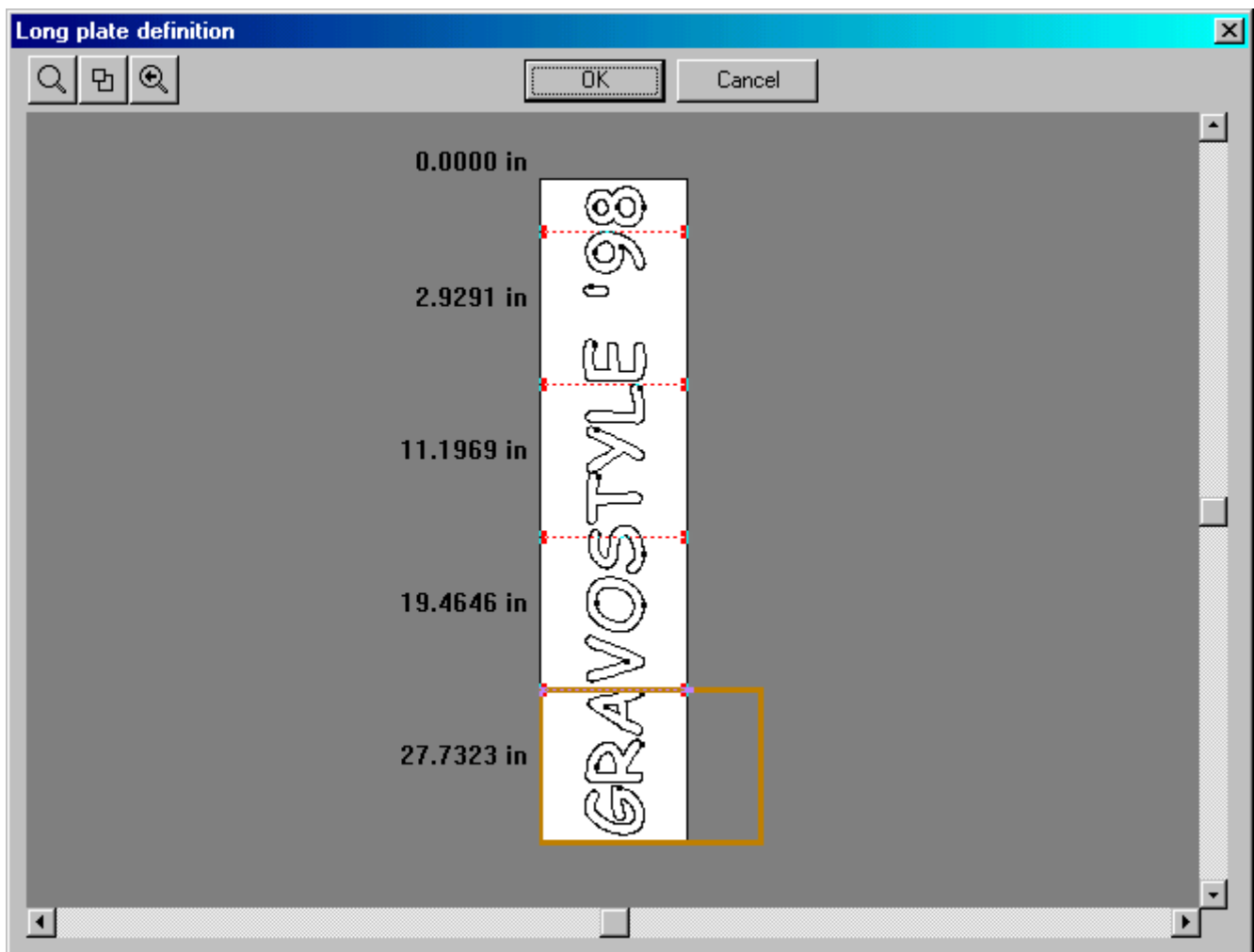
1. The Long Plate Mode allows you to engrave a job, which the definition of the material overflows, the engraving area either on the length or height. Cylinder engraving and Matrix functions are not accessible in Long Plate Mode. When the Material Definition Page pops up, enter the size of your piece of material. Keep in mind that your material can only be oversized on one dimension. Long Plate is best accomplished with a T-slot or Vacuum Table because the material is orientated in the top left corner.



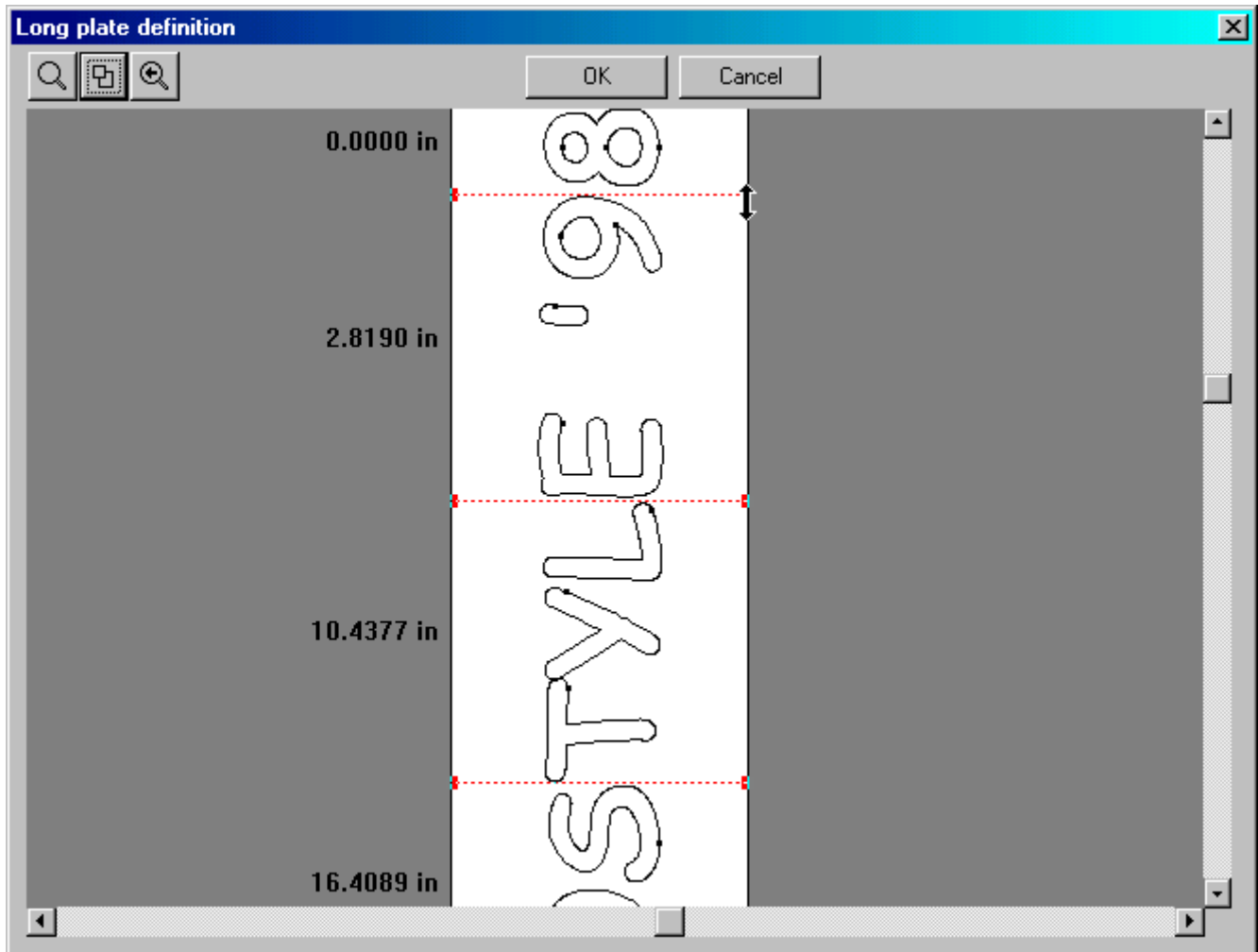
2. Click the OK button and an Overflow window will pop up. To work in the Long Plate Mode or the Cylindrical Mode you will click on the NO button. You will now be in the Main Edit page with your material as defined.



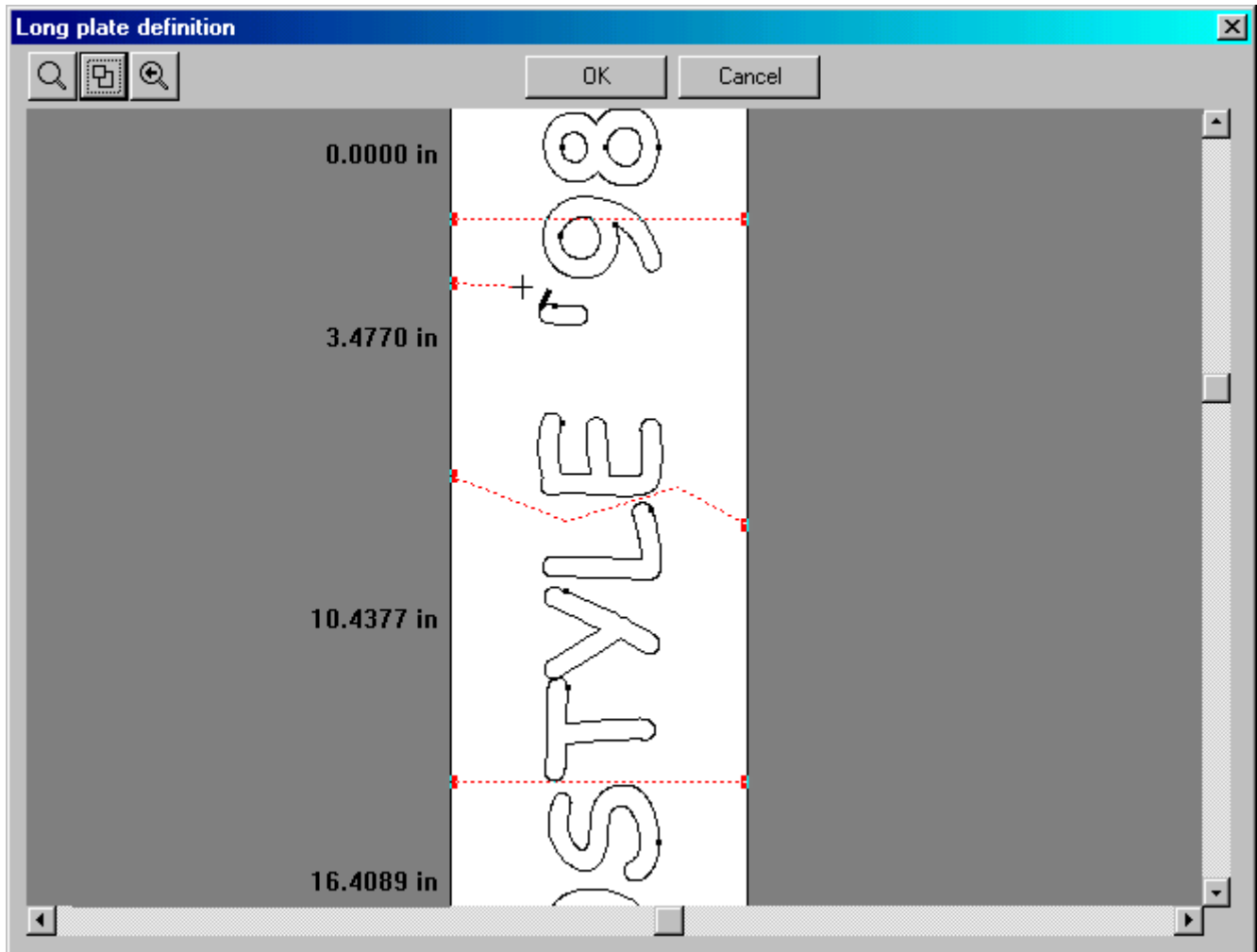
3. Finish laying out your piece with your text or logos. Once this is complete click on the Machining icon  and the Long Plate Definition page will pop up. This is where you can modify your layout. The numbers that you see on the left of your piece is the measurements that you need to make on your piece of material. The best way to do this is actually place a removable mark on the material at these measurements. The red dotted lines depict where the machine will stop for you to move the material.



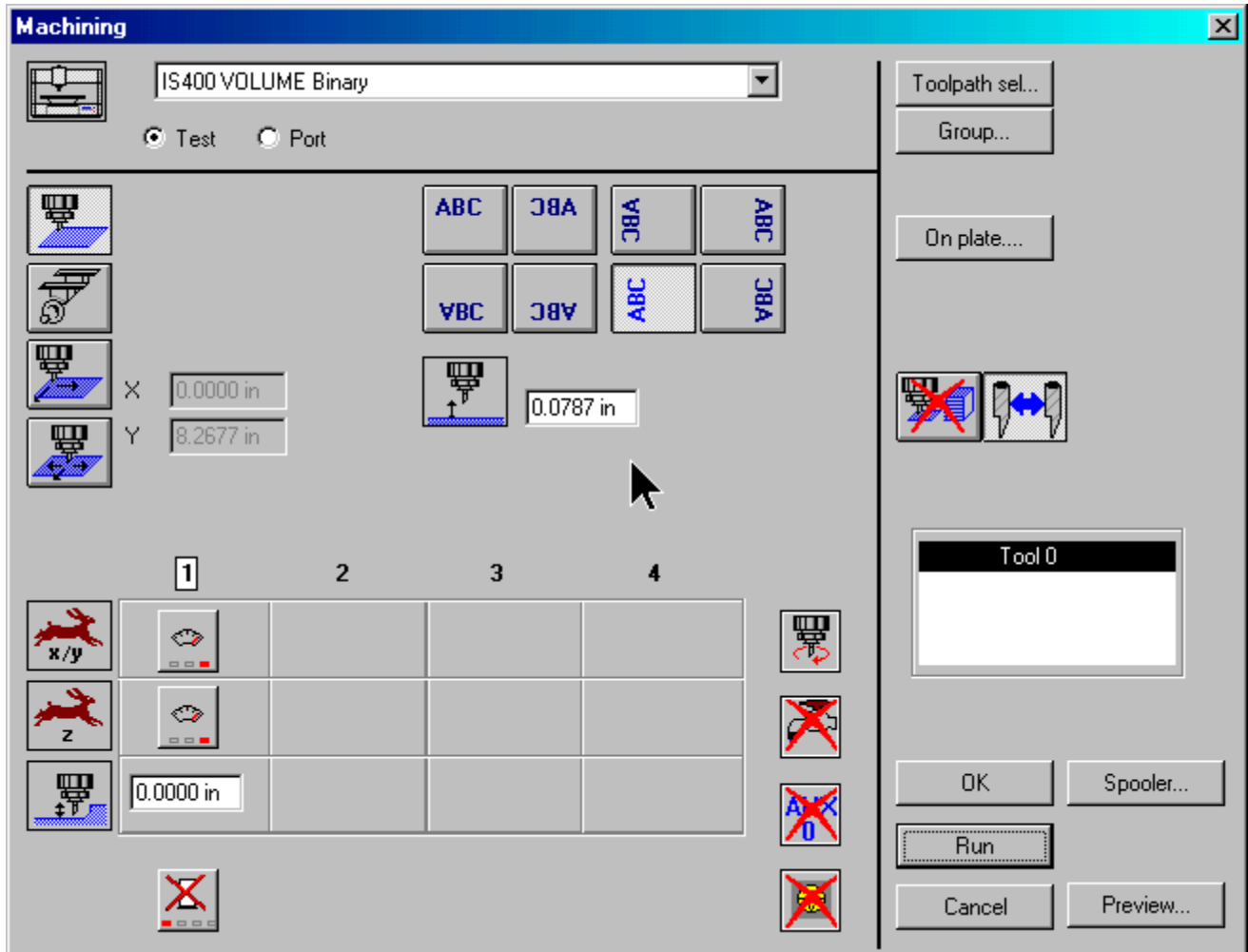
4. If the red dotted line falls in the middle of a letter it will be very difficult to match this up perfectly for it not to show. We need to move this line to fall between the letters. On the right side of the red dotted line, when you get the double arrow, click. Now when you drag your mouse the line will move. Move the line until it is in the location that you want. Notice that all the other lines are recalculated. These too may need to be adjusted. Once you have the lines where you want them mark your measurements on your piece of material. Click on the OK button.



5. Just moving the straight line will not get between the letters. If you click on the left side of the red dotted line the cursor will change to a drawing tool. Every time you click you can change the direction of the line. Using this tool will also change the location of the rest of the lines. Click on the OK button.



6. Now you will be in the Machining Page, where you setup how you want to engrave your piece. Click on the preview button and you will see the order in which your piece will be engraved.



7. Click OK and then Run. The entire job will be sent to the engraver. Once the first section is engraved the machine will pause and the Handheld Controller will say Move piece. Move the piece to the next tick mark and press the Run button on the Handheld Controller.

