




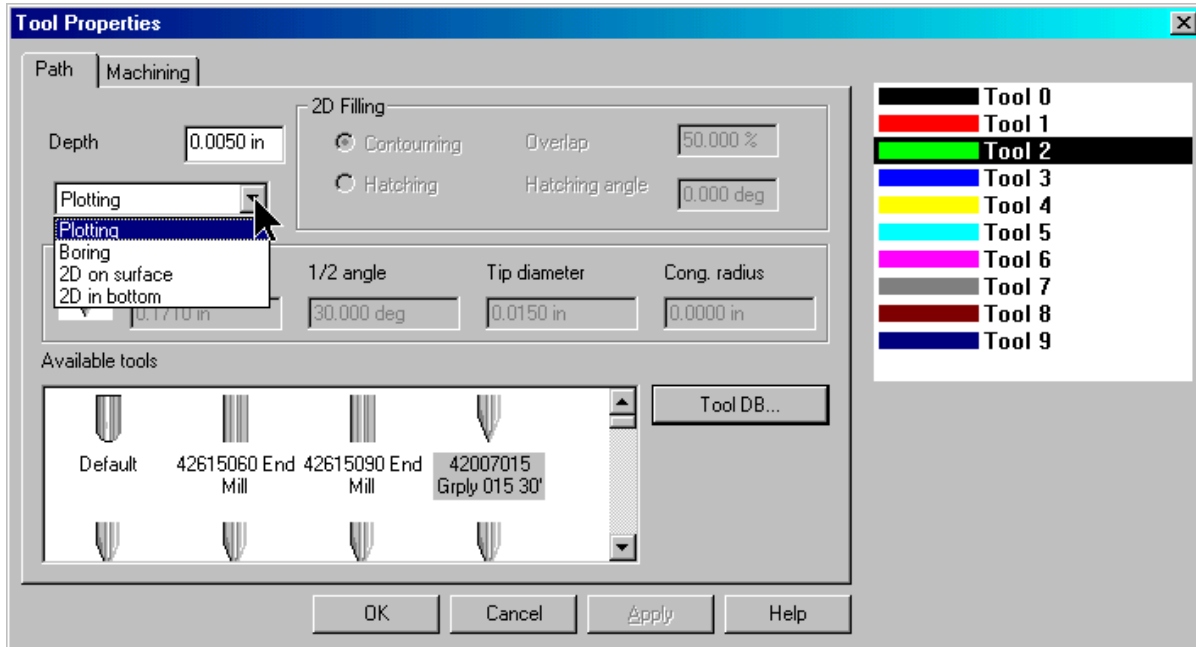
GRAVOGRAPH NEW HERMES

Machining Tools

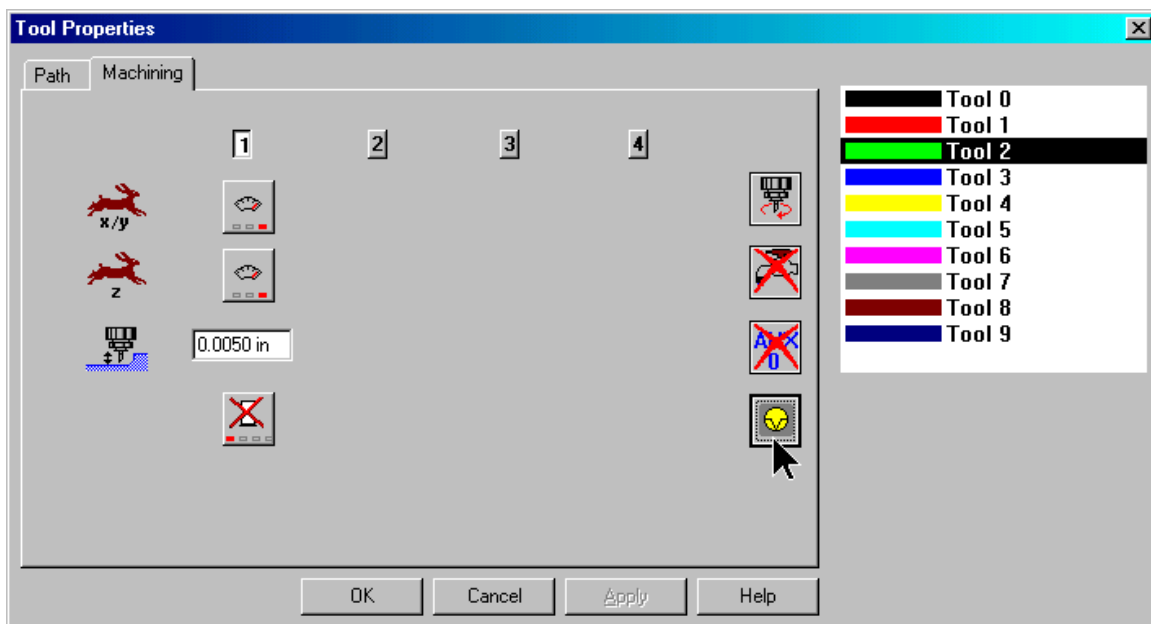
1. In the Graphic Level of the software you have the ability to do more than just Plot and Bore. You can create fills of either contouring or hatching. This will give you the ability to fill closed contours to give your work that big bold look. With the contours select that you want to fill click on the Machining Tools icon . The Machining Tools window will pop up.




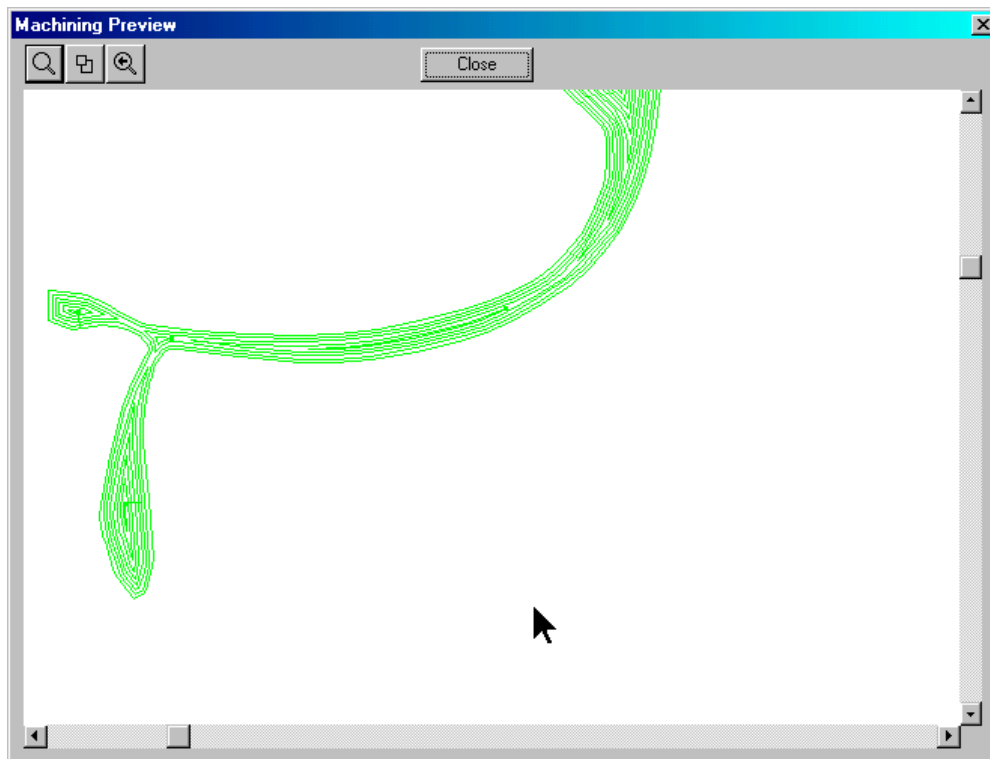
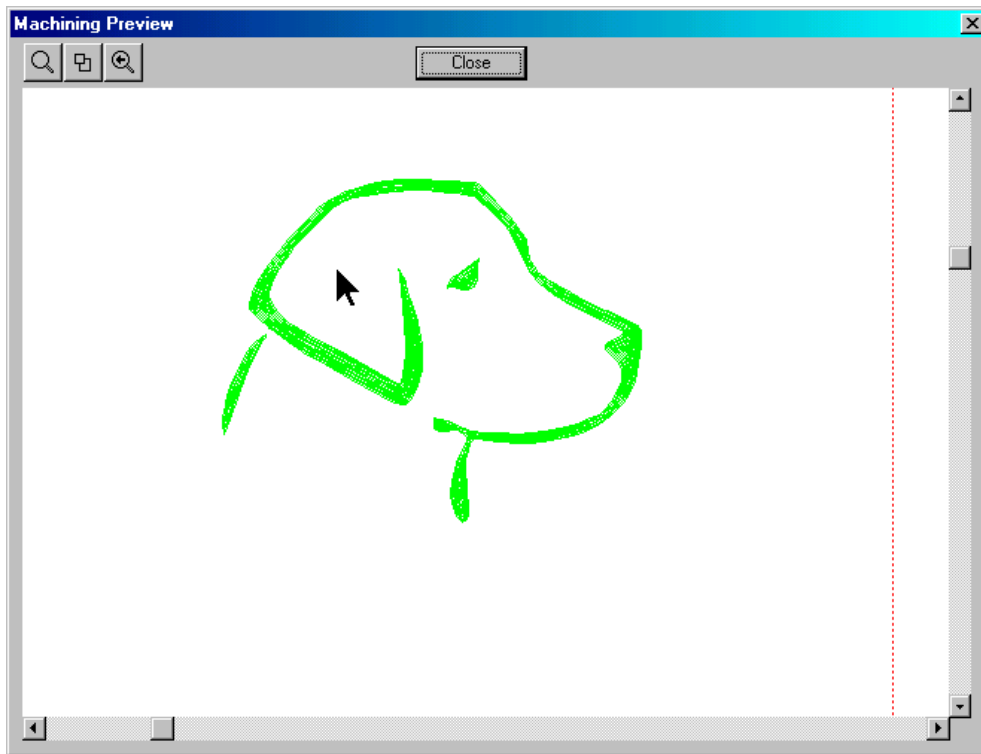
- Double click on the color that you want to assign the contours. Now click off to the side of your work and you will see that the contours have changed to that color. Select the contours again and the tool will highlight again on the Machining Tools window. Now we must assign Machining Properties to this tool. Click on the Properties button and the Machining Properties window will pop up.



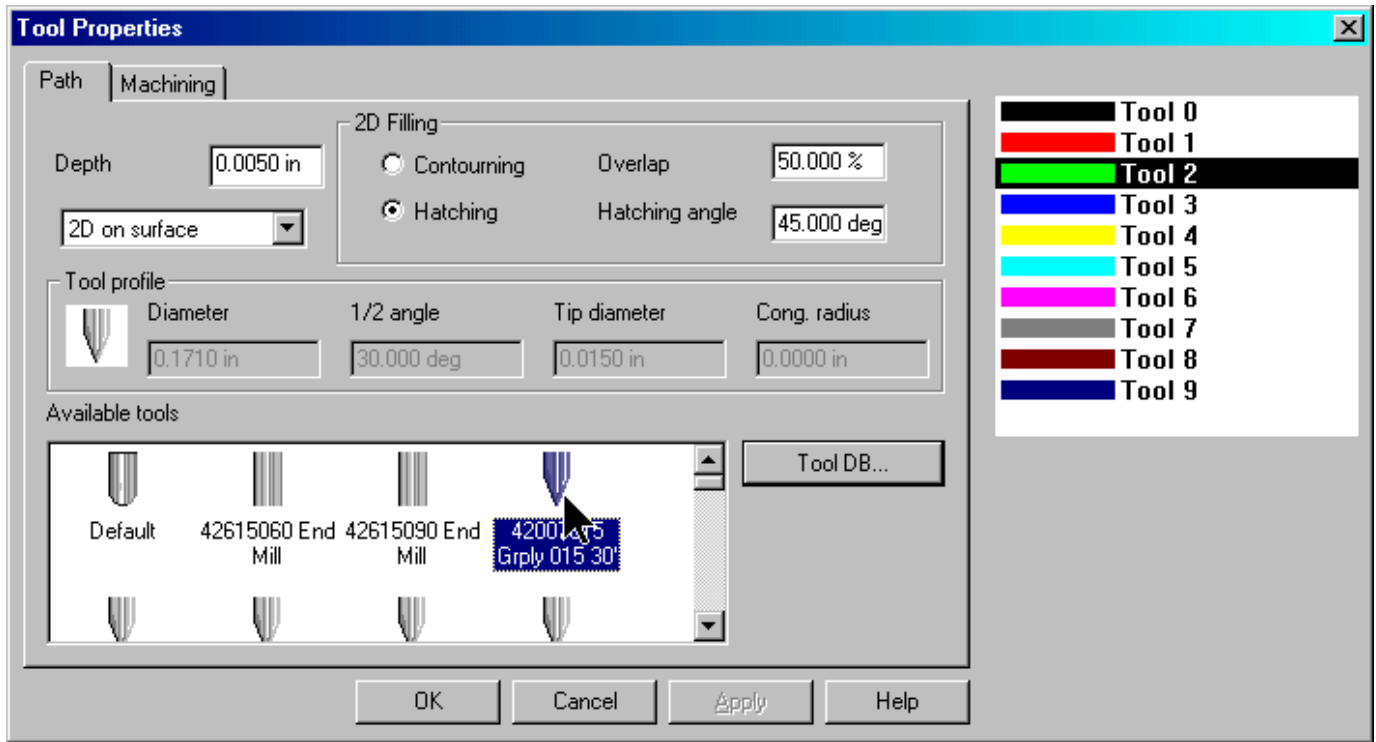
- Select the tool that you are going to use and then the type of tool path that you want. In most cases you are going to use 2D on Surface. Enter the Depth you are engraving at. When you selected the type tool path you will notice that the Contouring and Hatching circles lit up. You will need to choose between the two. We are going to use Contouring first. Contouring means that the fill paths will follow the original contours but stay inside of them. Now click on the Machining Tab to setup Machine Properties for this tool path.



4. Click on the OK button to have the changes take effect and go back to Main Edit page. Now you are ready to take the job to the engraver. Click on the Machining icon . Before you send your job to the engraver click on the Preview button to see your job. This is the location to see you defined tool path.



- Now we are going to see what the Hatching tool path looks like. Follow the same procedures until you get to the Machining Tools Properties page. Instead of selecting Contouring, select the Hatching and enter the Hatch Angle.



6. Click the OK button to go back to the Main Edit Page. Click on the Machining icon . Click on the Preview button to see you job.

