
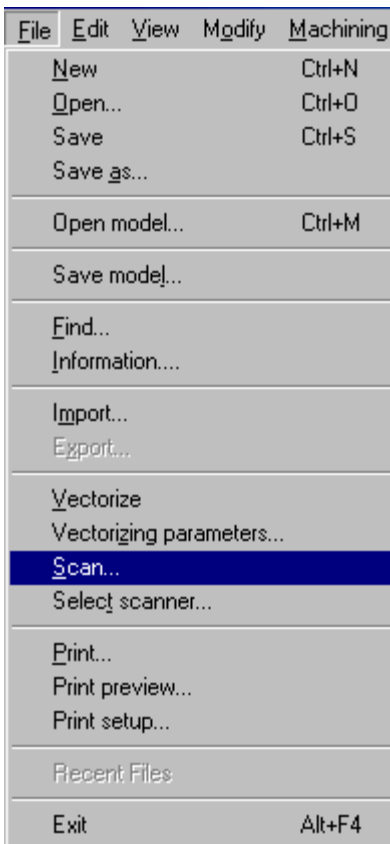




GRAVOGRAPH NEW HERMES

Scanning

1. The Graphic Level of Gravostyle contains the tools to scan or import Bitmap images. A bitmap image must be vectorized to engrave. The vectorization process creates actual tool paths from the bitmap image. There are many different manufactures for scanners. For the purpose of this Module we will use the HP scanner, as it seems to be preferred by our customers. Gravostyle will only scan from the Select Mode of the software. Click on the Scanner icon  to begin the scanning process or from the File Menu.



2. When scanning a logo into Gravostyle here are a few things to keep in mind.


You are always better off if the customer brings you Camera Ready artwork. It is always cleaner to work with, and will require less cleanup time on your part.

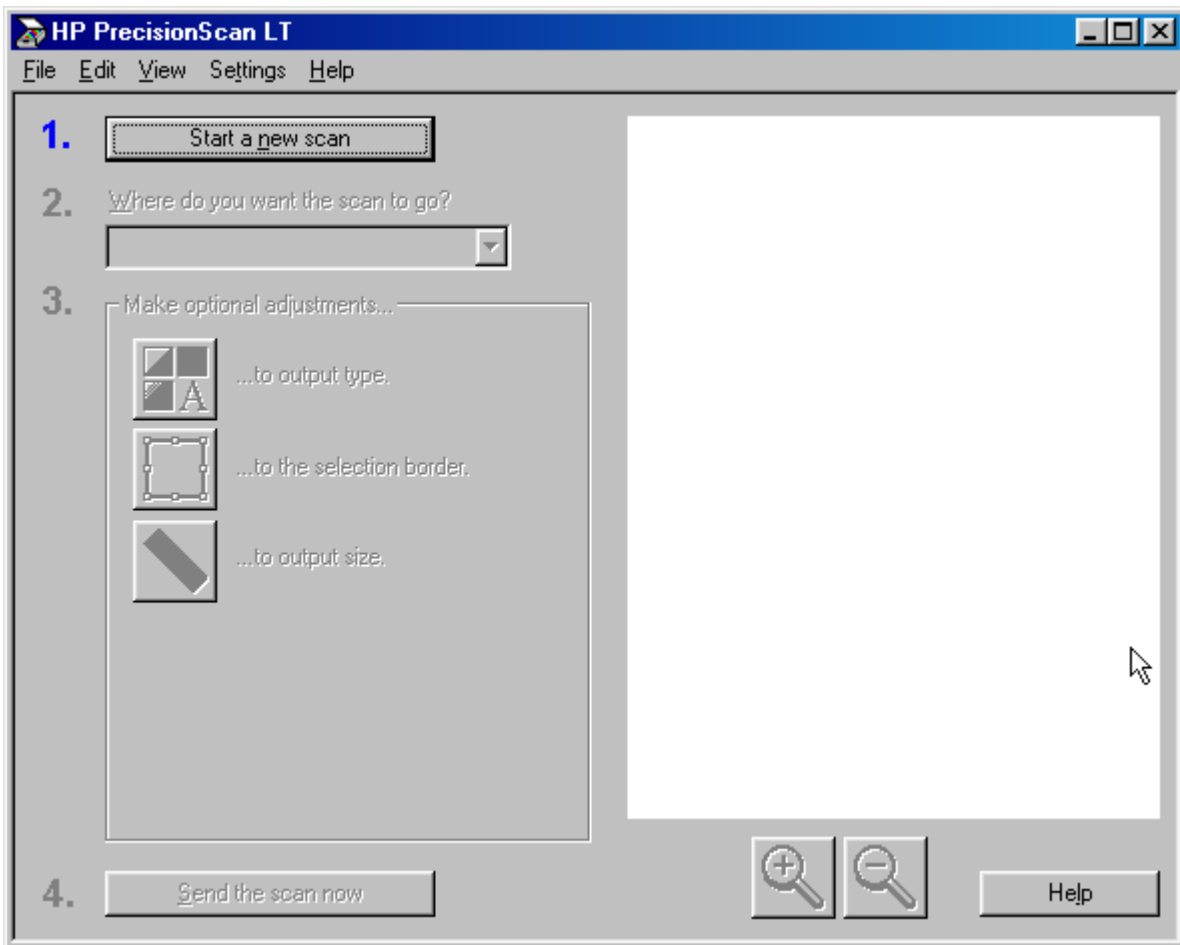
Black and White Line Art is always the best way to scan a logo. You are only dealing with two colors.

Work with the scanner software to make your image size as small as practical. Gravostyle has only so much memory to work with. If the Bitmap is huge it reduces the amount of memory for vectorization.

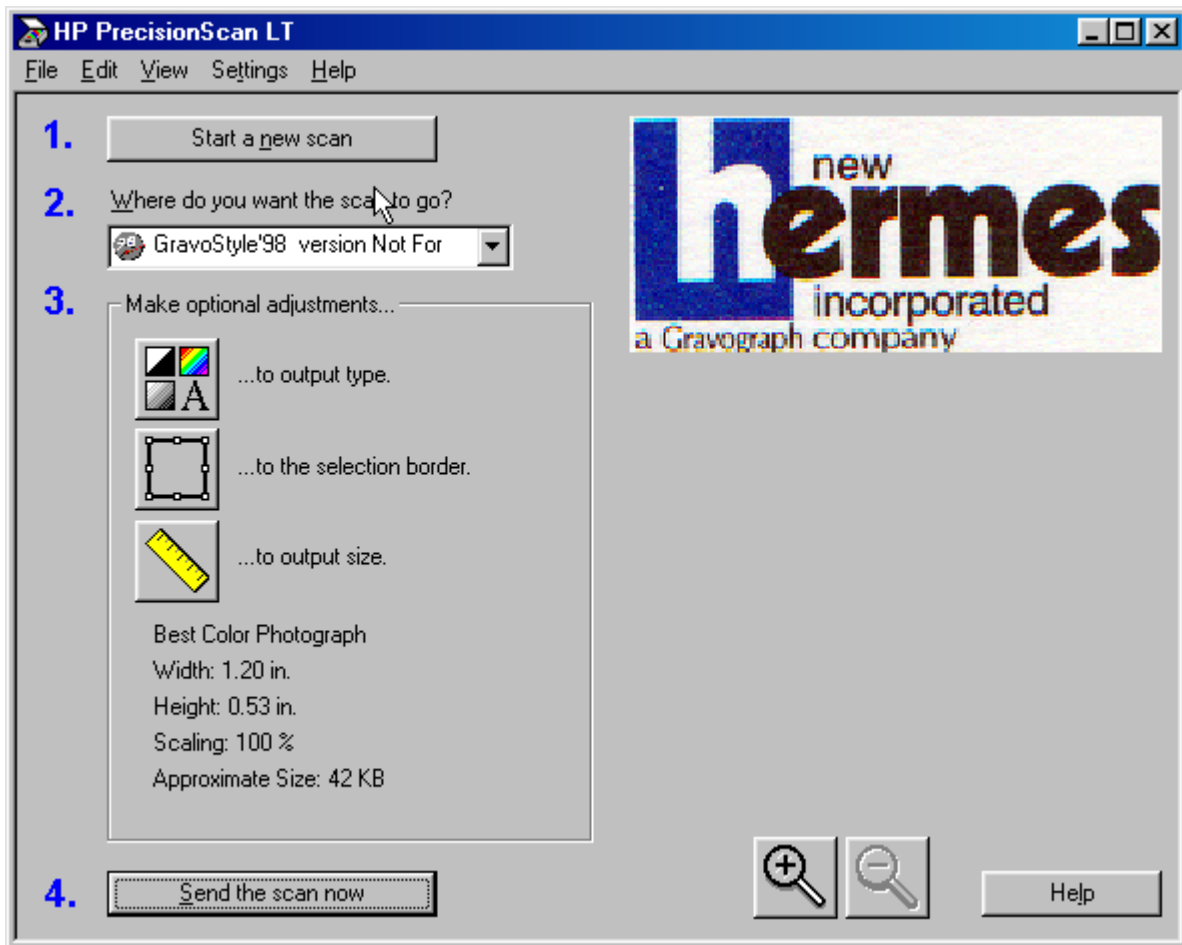
Once the image is scanned into the software **NEVER** make it larger. This will increase the pixel size and cause problems during the Vectorizing process. If anything, make it smaller, there will be less cleanup time in the end.

It is always better to use text from the program. If you scan text it will take a considerable amount of time to clean it up after it is vectorized.

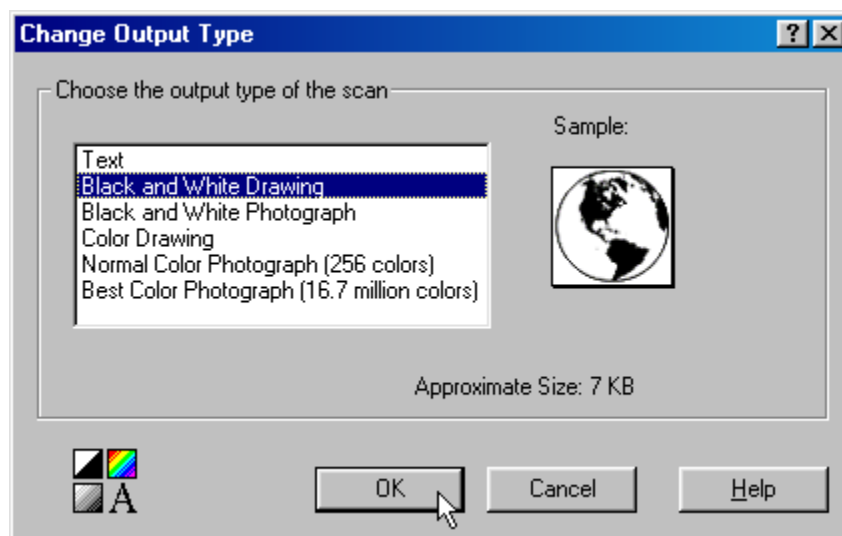
3. Click on the Scanner icon , the software will pop up.



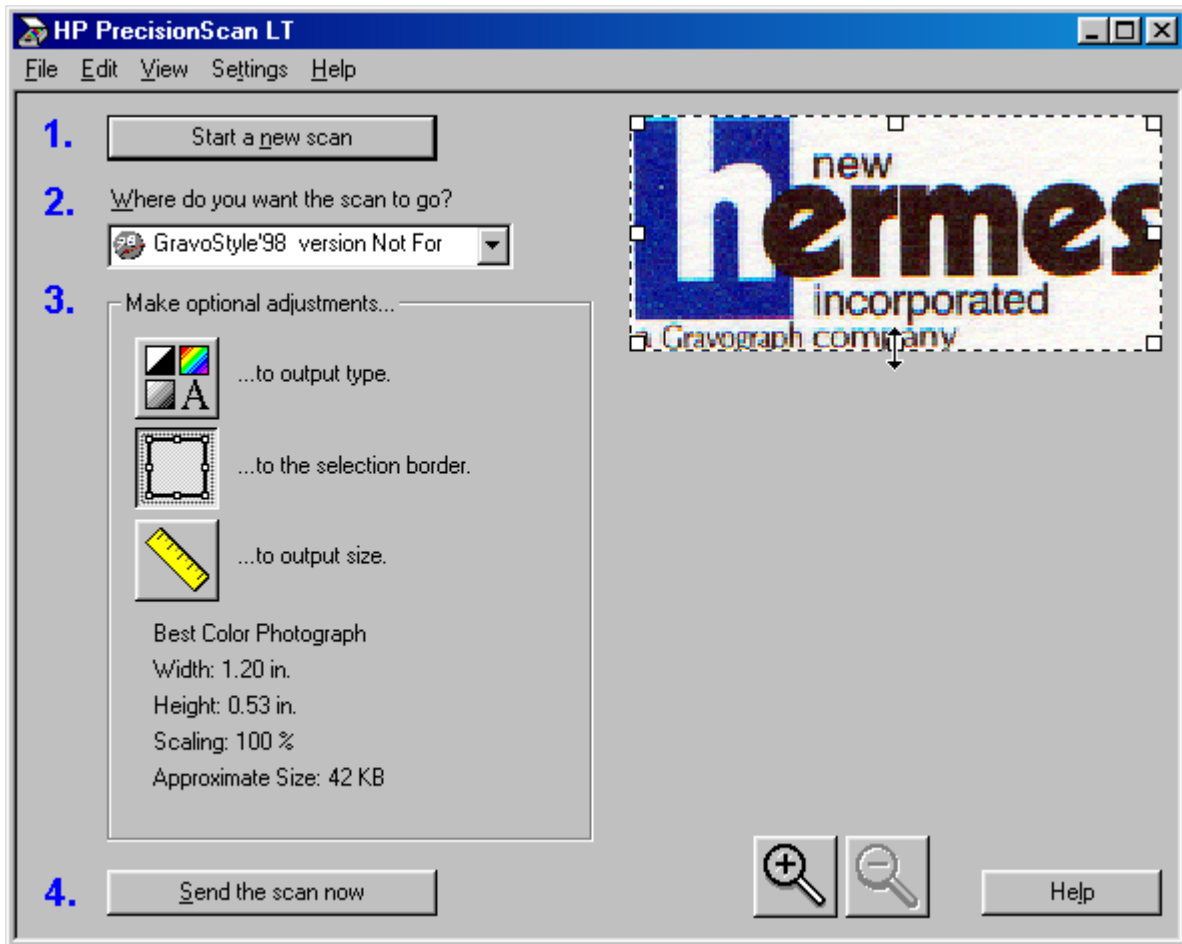
- Click on the Start New Scan to prescan the piece on the scanner bed. Once the piece is prescanned, changes can be made to the size and the color.



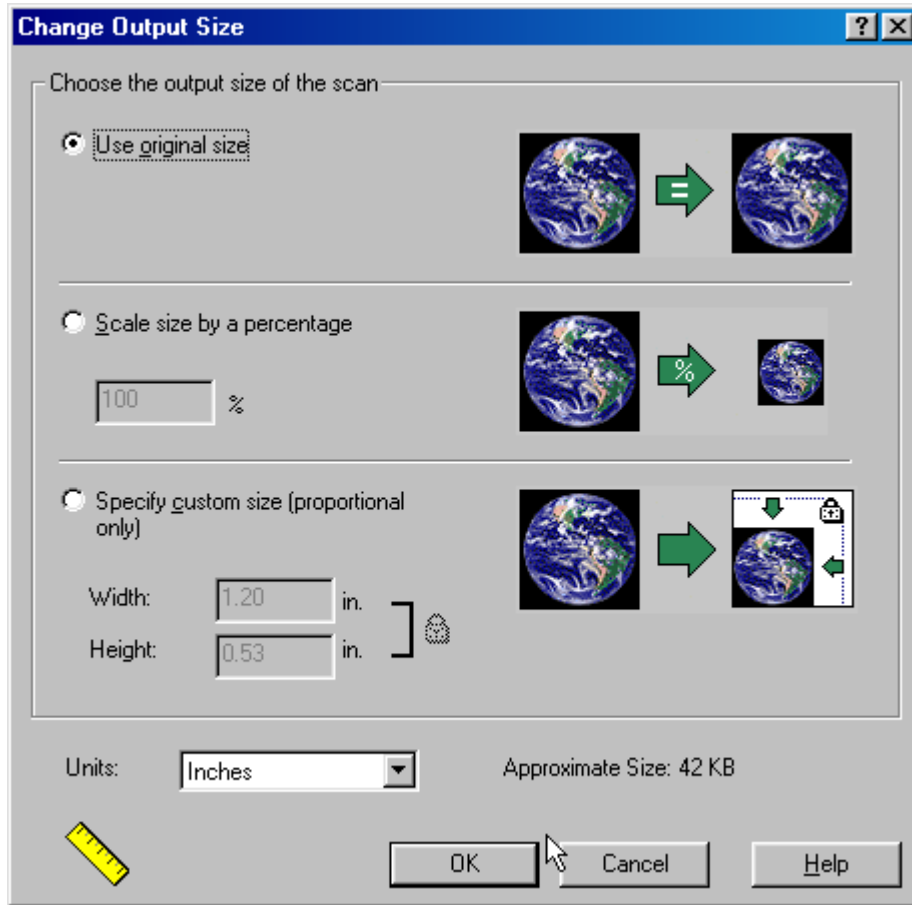
- Now select the output type. Keep in mind that Black and White Drawing (line art) is usually the best. Notice how this change will also decrease the file size. Click the OK button.



- Once you have converted the image to the desired color scheme, click the Selection Border button. This will generate a dotted line box, drag the box to define the area of the image to be scanned. Pointing the cursor at the small boxes will cause a directional arrow will pop up. Click and drag with the mouse to size the box. Notice that this also controls the image size.



7. The Output Size feature is also used to control the image size. Click on the Output Size button, the Change Output Size window will pop up. Select the Use original size option. This will cause the image size to be the same as the area selected by dotted line box. Scale by percentage, will resize the image based on the percentage entered into the box. Proportional sizing will let you select an exact size, choose either height or width, the other field will be calculated.



8. Once the size and the color have been determined click the OK button. On the Main page, press the Send Scan Now button. The scanner will scan your image and display it in the edit page of Gravostyle.

